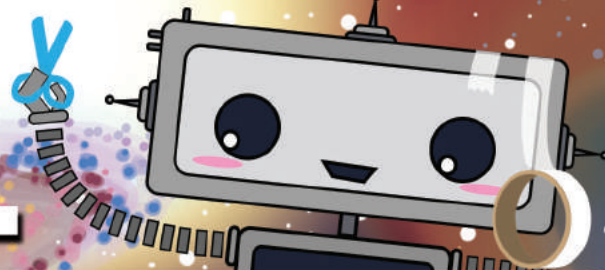


# BUILD YOUR OWN SEROL



You will need: **glue, scissors, sticky tape** and a **long pipecleaner**. Make sure to cut along all black lines when instructed, including the slots, holes and crosses found on the **BODY** and **HEAD** pieces. To cut neatly with no mess get a sharp pencil and an eraser. Hold the eraser under the place you'll be making the holes and push the sharp point of the pencil through the paper, into the eraser.

Cut pieces on sheet A, fold along dotted lines,

and sticky tape **BODY FRONT** to **BODY BOTTOM**.

Roll the **LEG** piece,

apply glue to the end and stick.

Twist the **FOOT** piece until it forms a cone and stick.

Push the **LEG** through the hole in the **FOOT** and glue down the flaps.

Repeat the last three steps with the second **FOOT** and **LEG**.

Insert each **LEG** piece into the holes in **BODY BOTTOM** and glue down the flaps.

Cut out the pieces on sheets B and C, fold along dotted lines,

and sticky tape **HEAD SIDE** and **HEAD FRONT** to **HEAD TOP**.

Roll **NECK** piece,

apply glue to the end and stick.

Insert the **NECK** piece into **HEAD BOTTOM** and glue the flaps down.

Twist the **ANTENNA** until it forms a cone, and stick.

Insert **ANTENNA** pieces into the slots on **HEAD TOP** and each **HEAD SIDE** and glue the flaps down.

Glue a pipecleaner in between the **HAND** pieces with sticky tape.

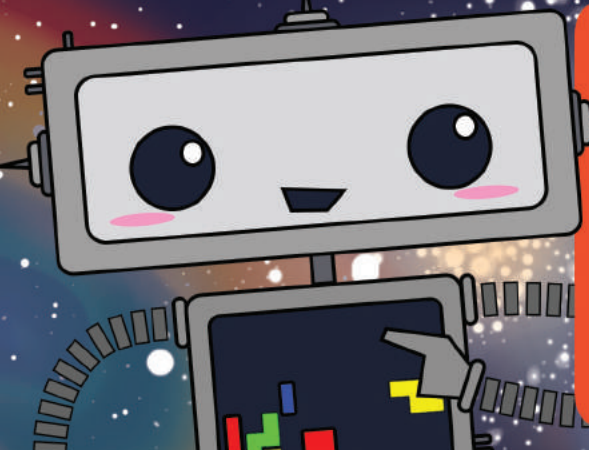
Twist each **SHOULDER** until it forms a cone and stick.

Thread the pipecleaner through the **SHOULDER** cone, with the pointed end facing the **HAND**.

Push the pipecleaner through one **BODY SIDE** piece, through the middle and out through the second **BODY SIDE**.

Then thread the pipecleaner through the second **SHOULDER** piece and glue on the **HAND**.

Push the **SHOULDER** flaps through each **BODY SIDE** and glue down.



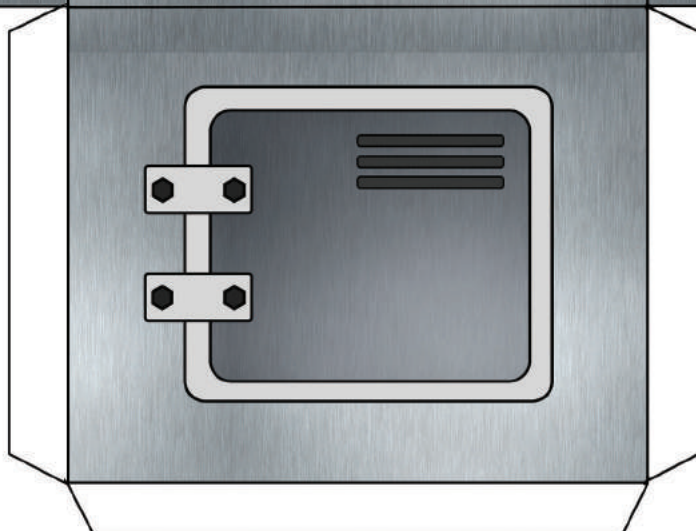
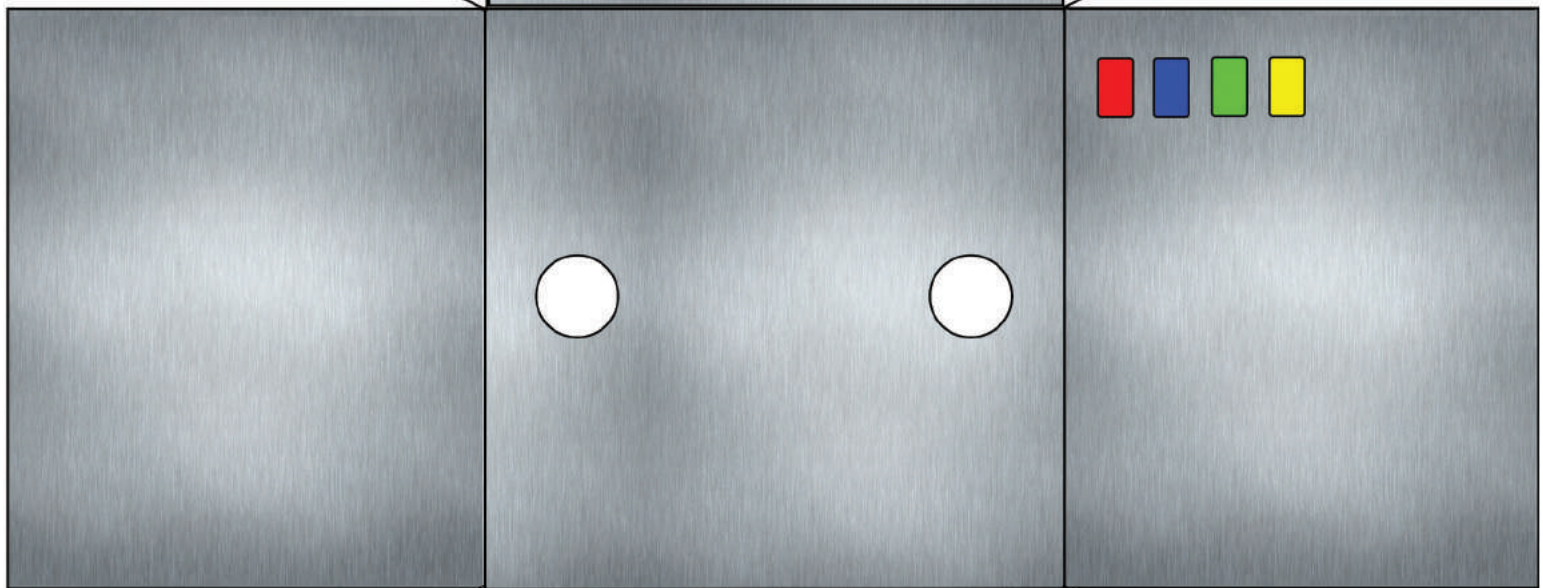
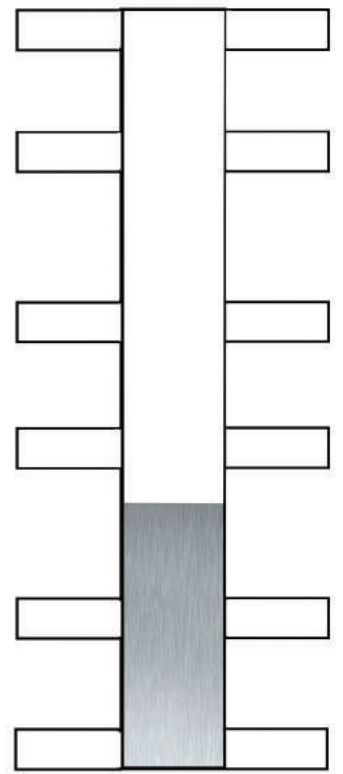
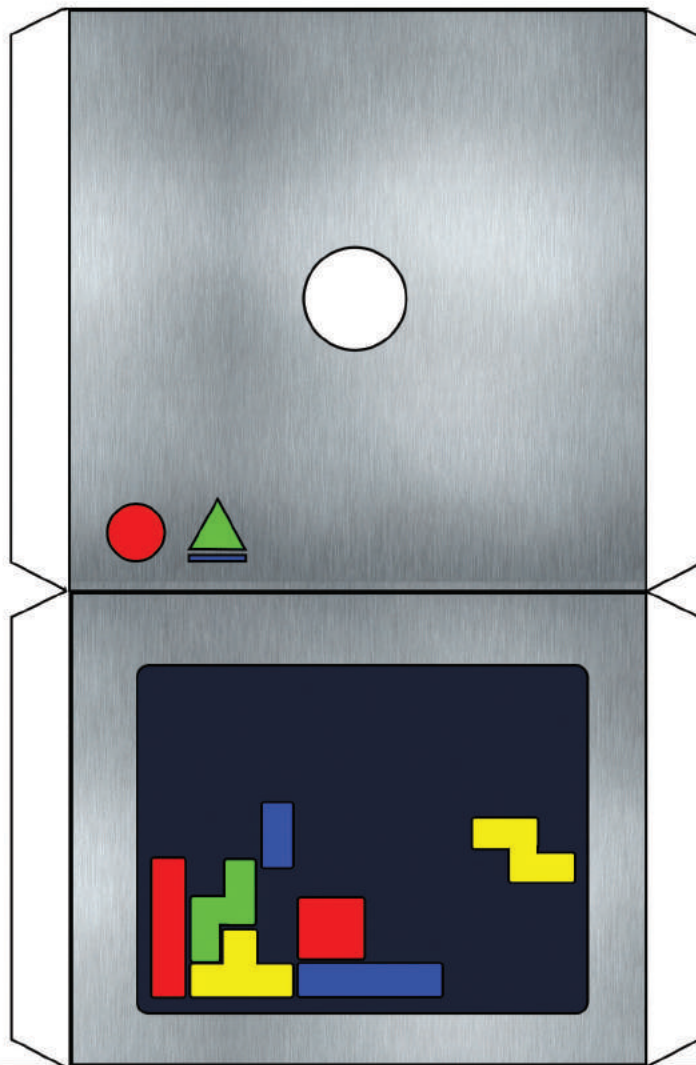
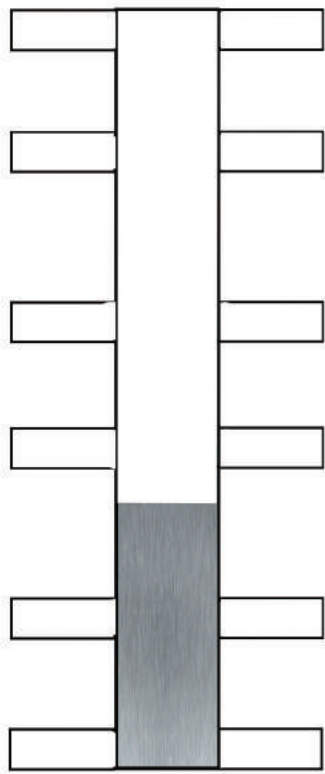
Push the **NECK** piece attached to **HEAD BOTTOM** through **BODY TOP**.

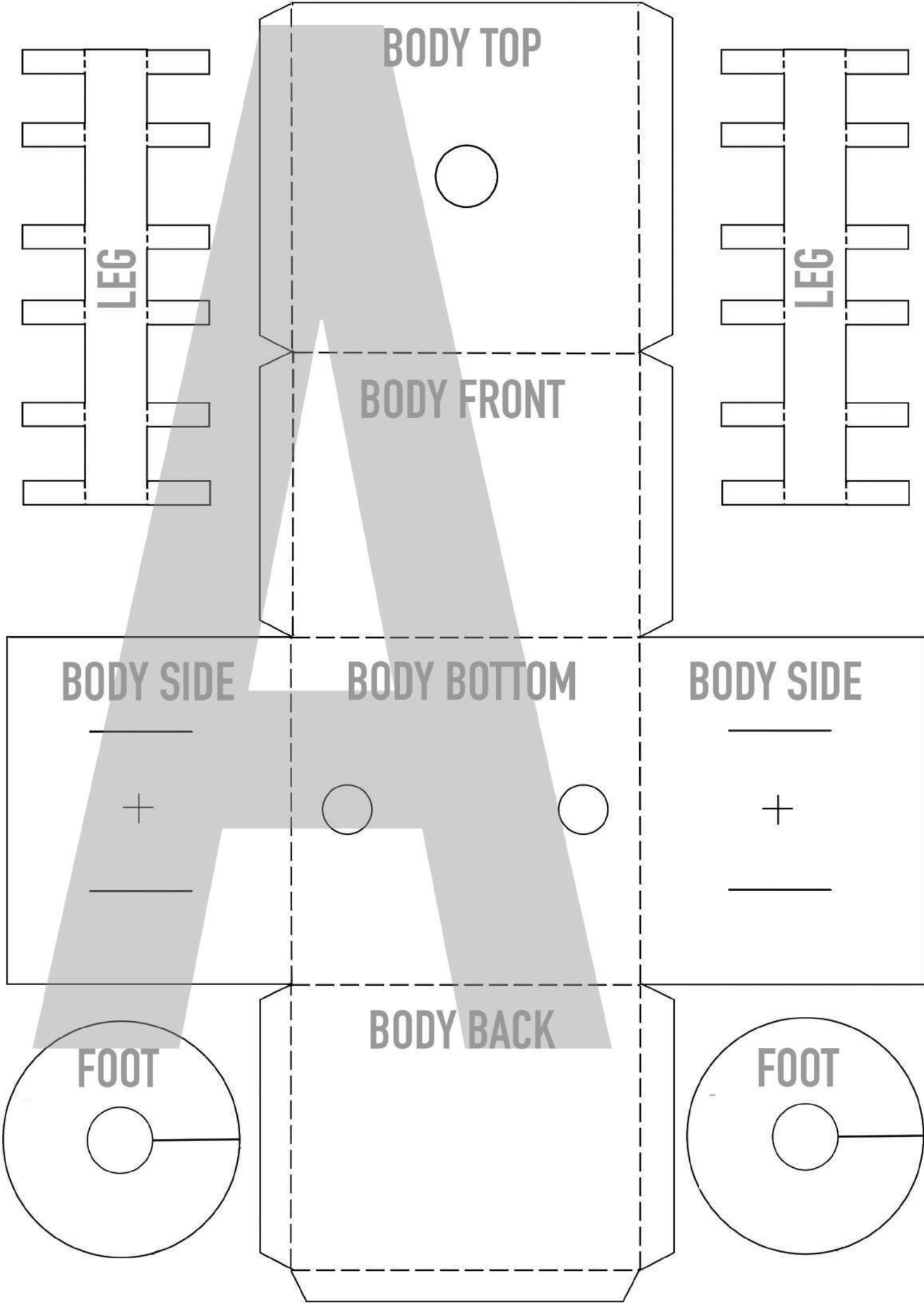
All the pieces are now attached, glue down the flaps to form your own **SEROL**.











**BODY TOP**

**LEG**

**LEG**

**BODY FRONT**

**BODY SIDE**

**BODY BOTTOM**

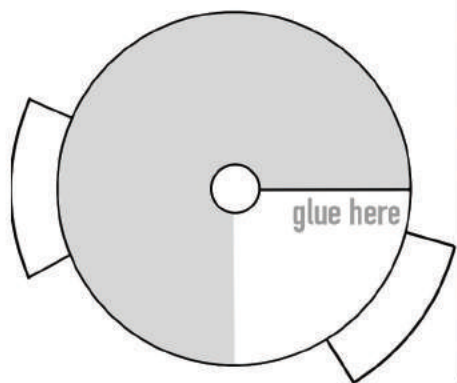
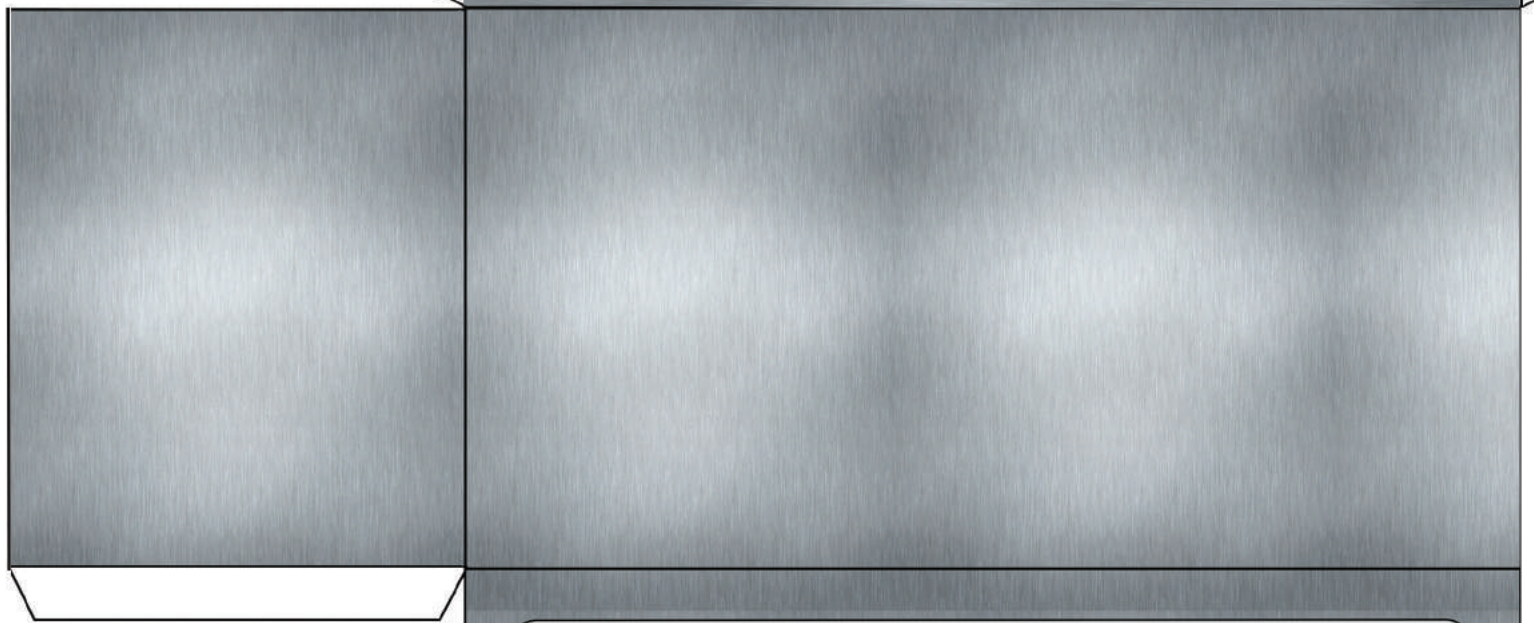
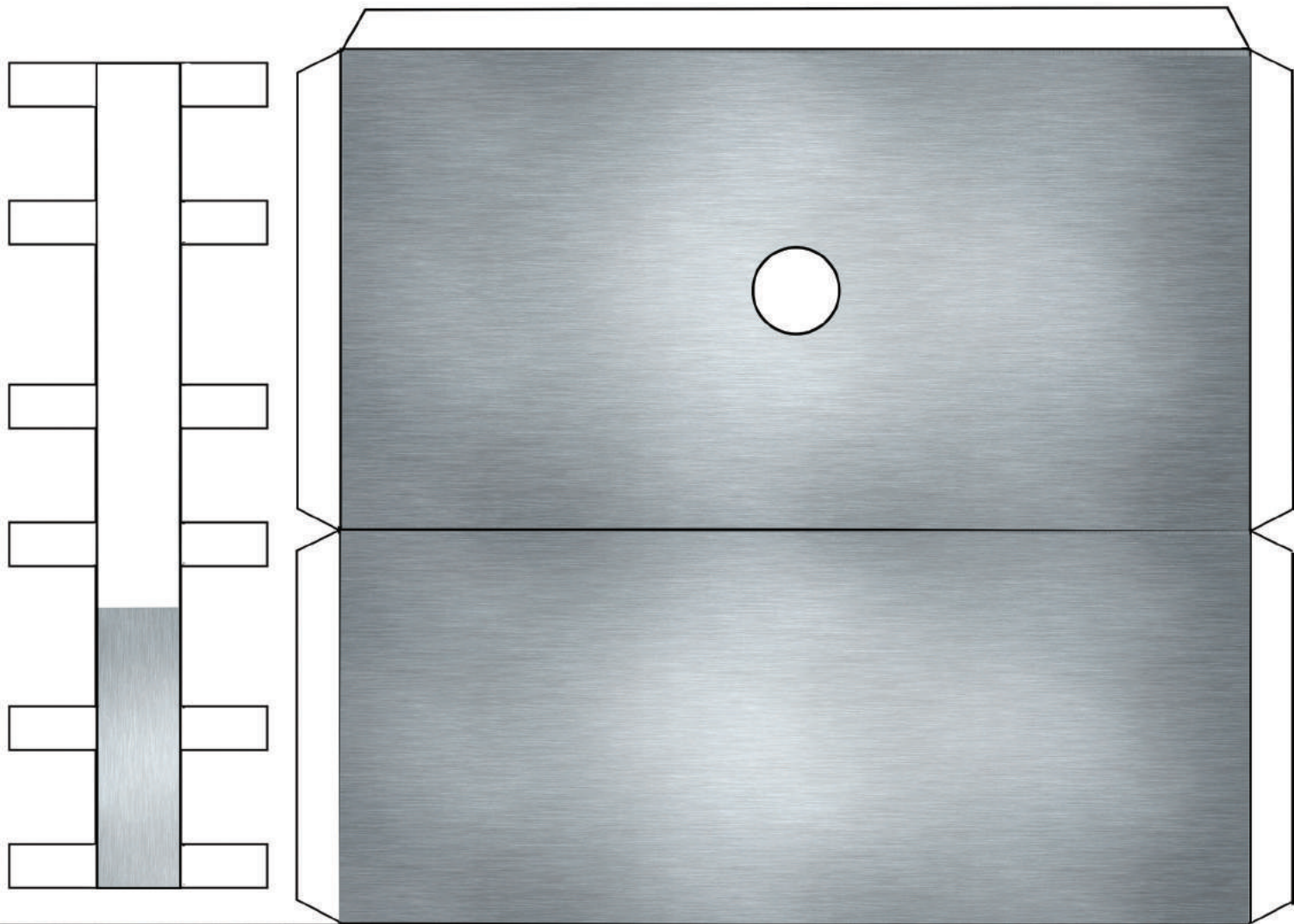
**BODY SIDE**

**BODY BACK**

**FOOT**

**FOOT**





HEAD BOTTOM

HEAD FRONT

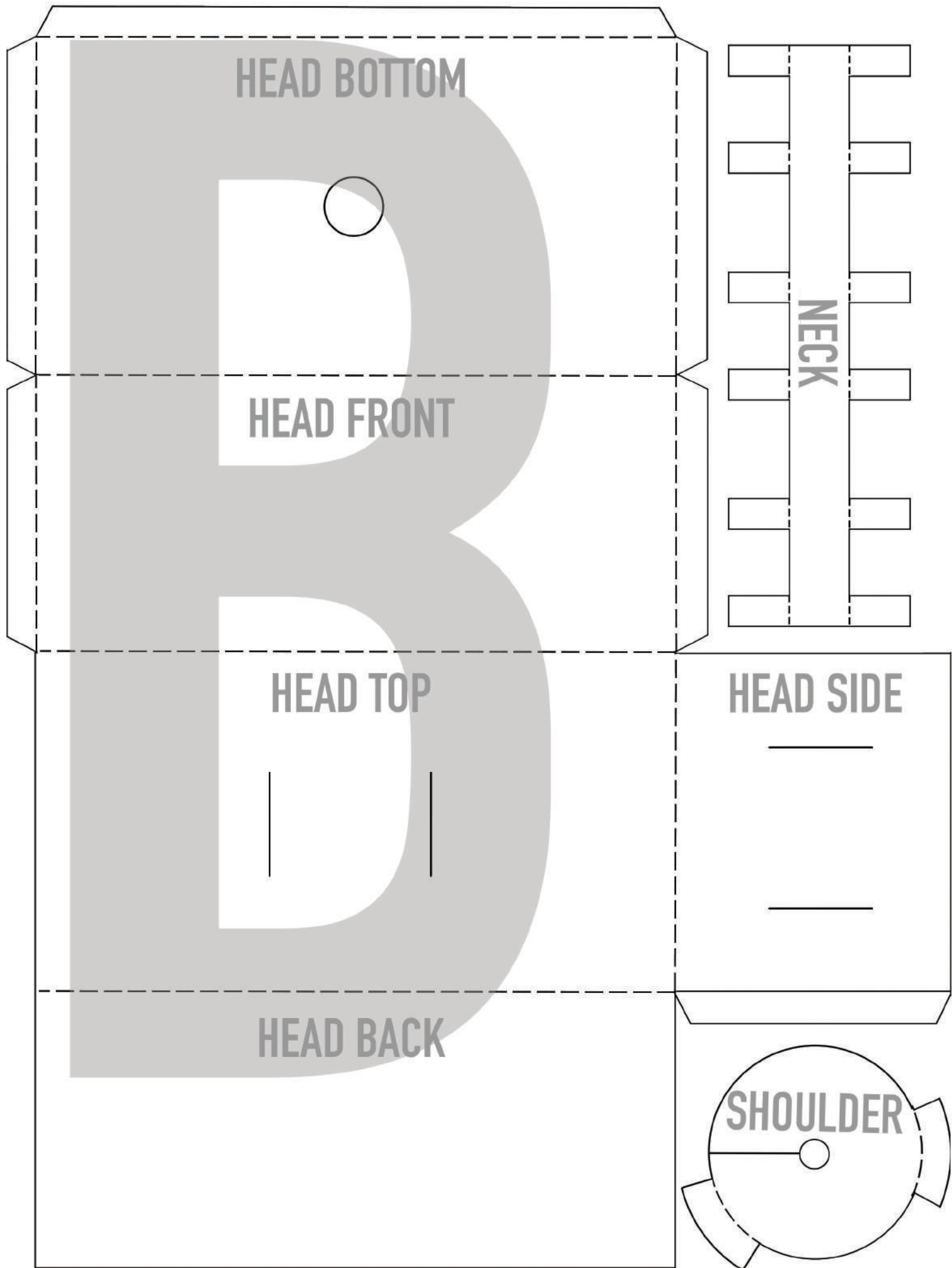
HEAD TOP

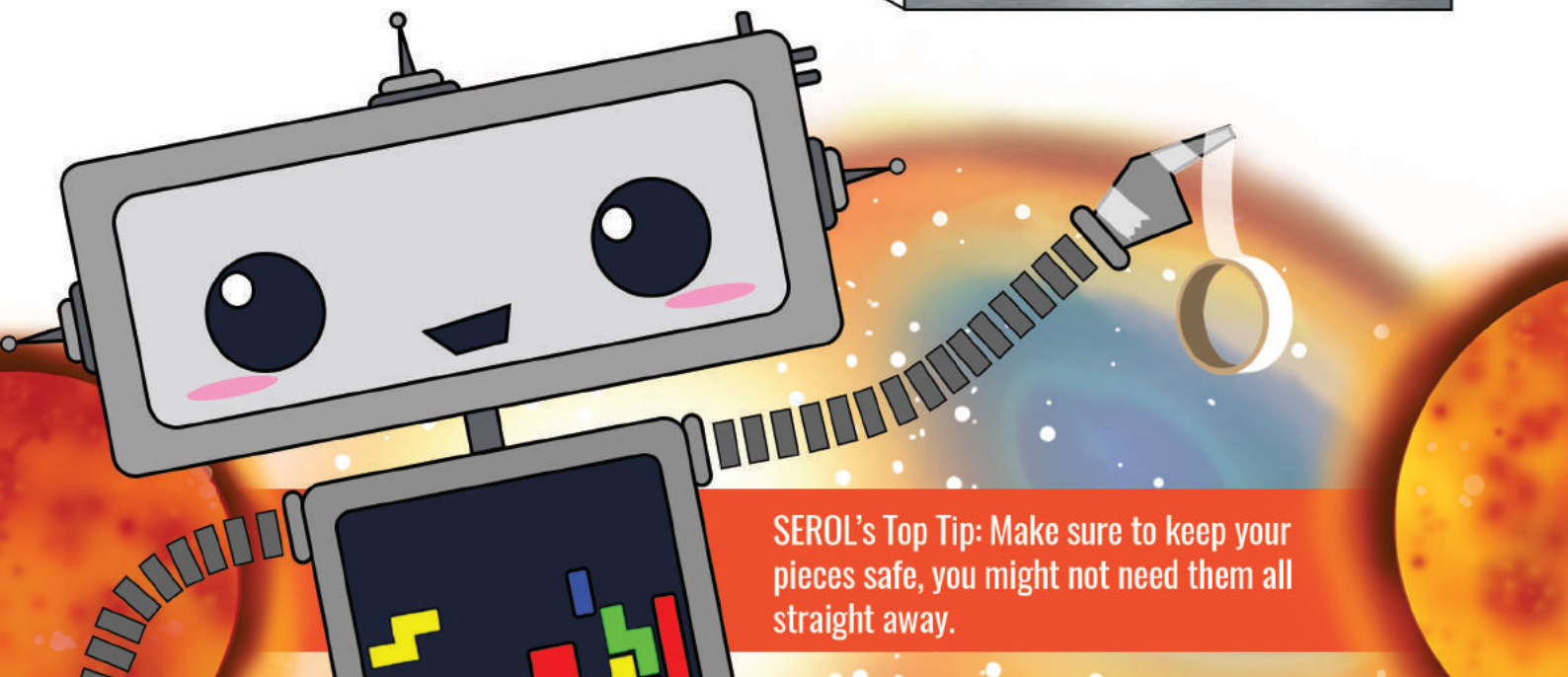
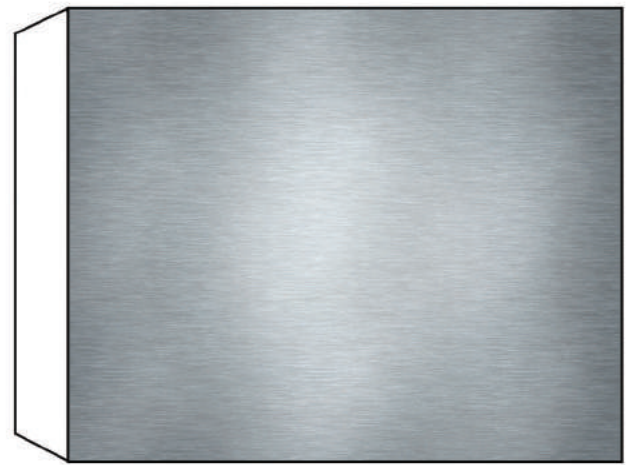
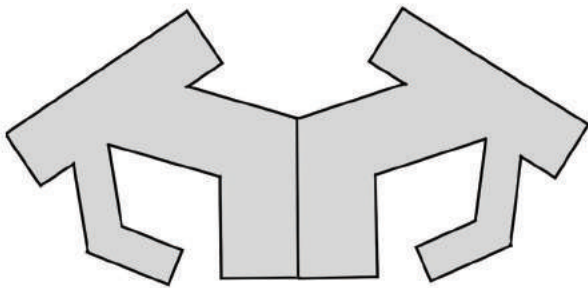
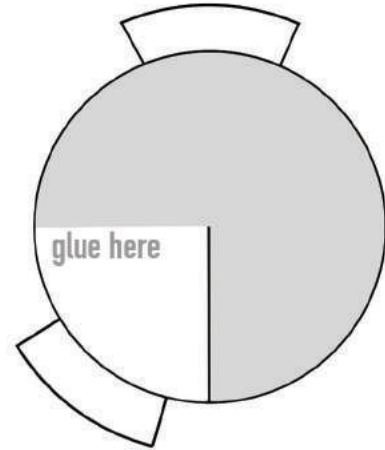
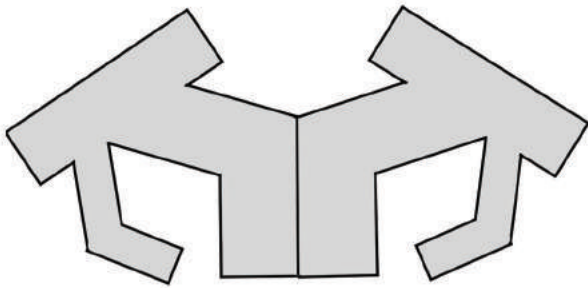
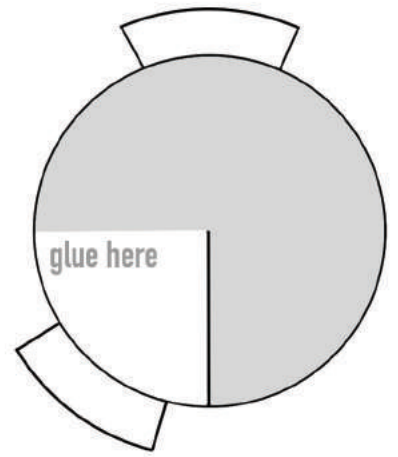
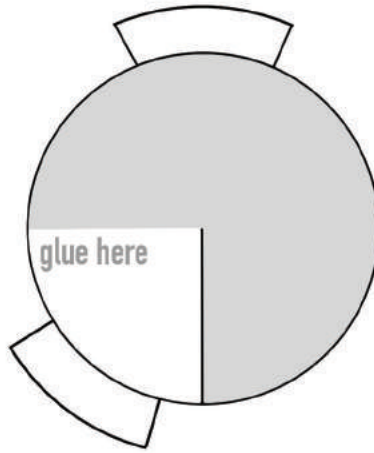
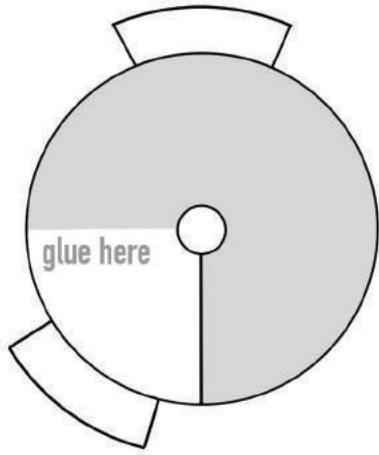
HEAD BACK

NECK

HEAD SIDE

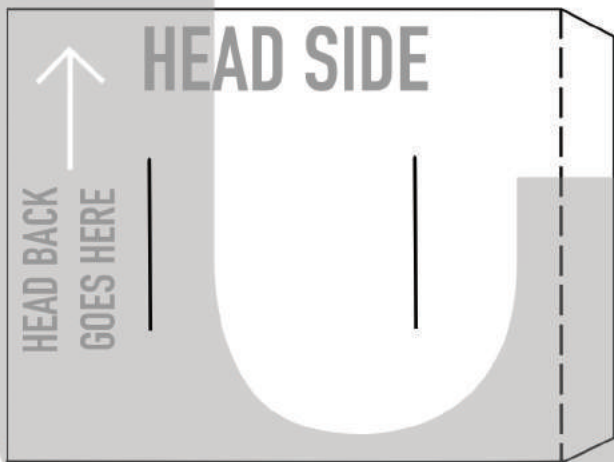
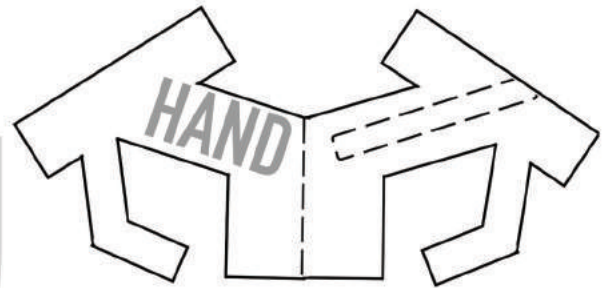
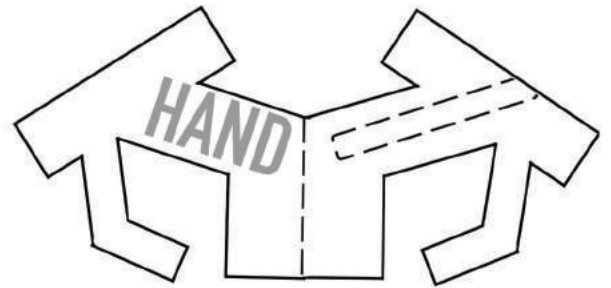
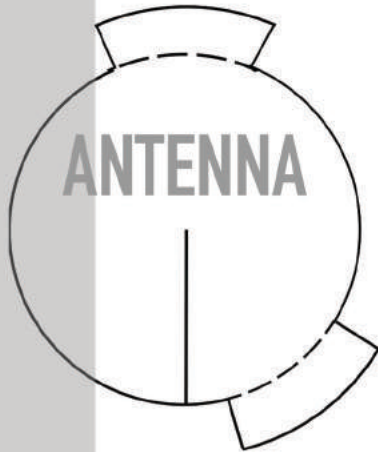
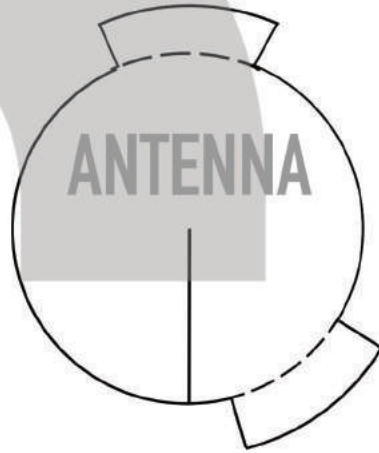
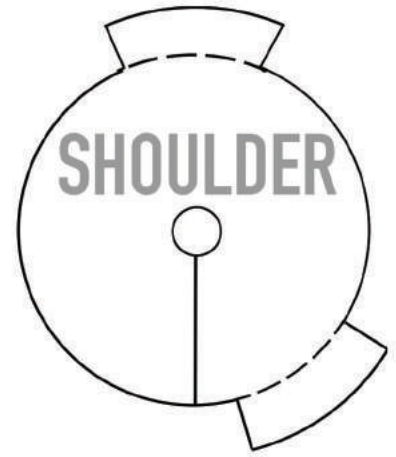
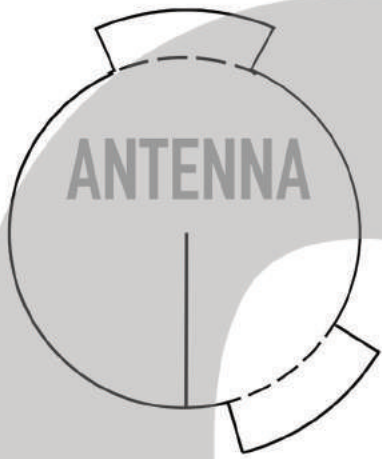
SHOULDER





SEROL's Top Tip: Make sure to keep your pieces safe, you might not need them all straight away.





# SEROL

COSMIC ADVENTURES IN SPACE

