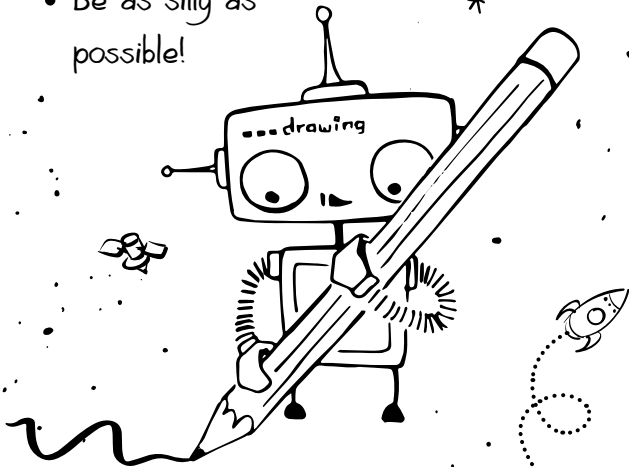


INSTRUCTIONS FOR ENJOYING THIS BOOK:

- Write and draw anything you want!
- Be as creative as possible!
- Be as silly as possible!



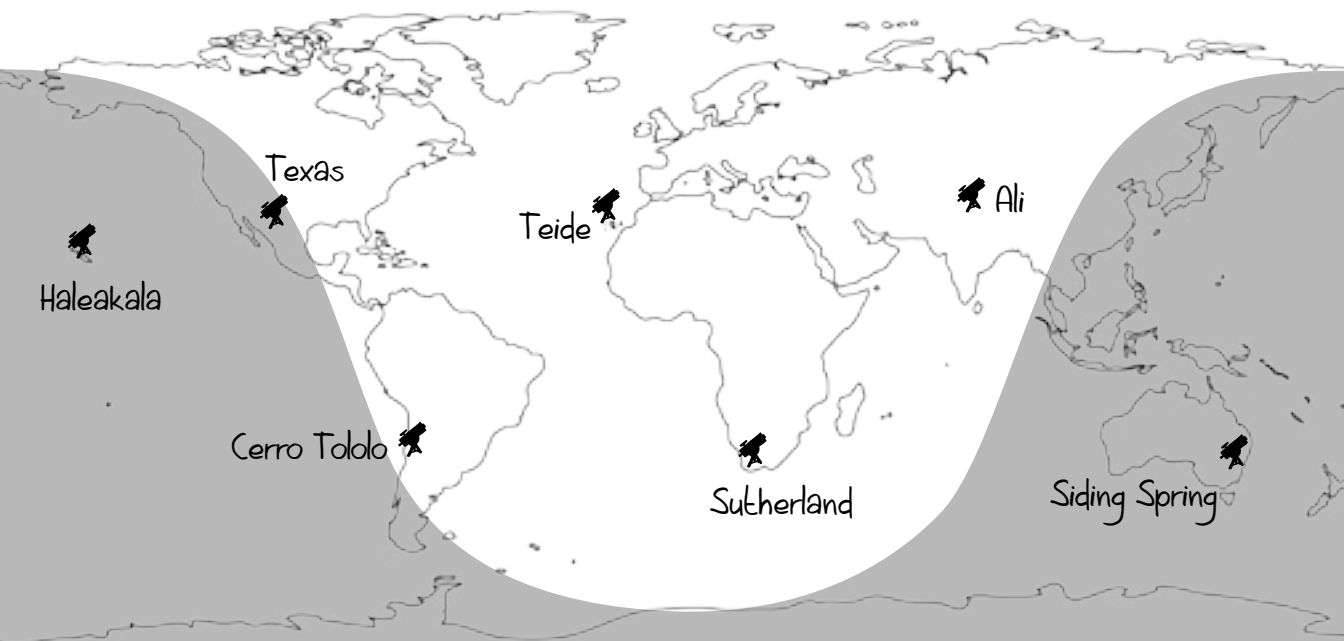
LET'S START!

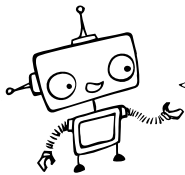
The telescopes

This map shows where you can find all of our robotic telescopes around the world.

Day and night

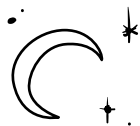
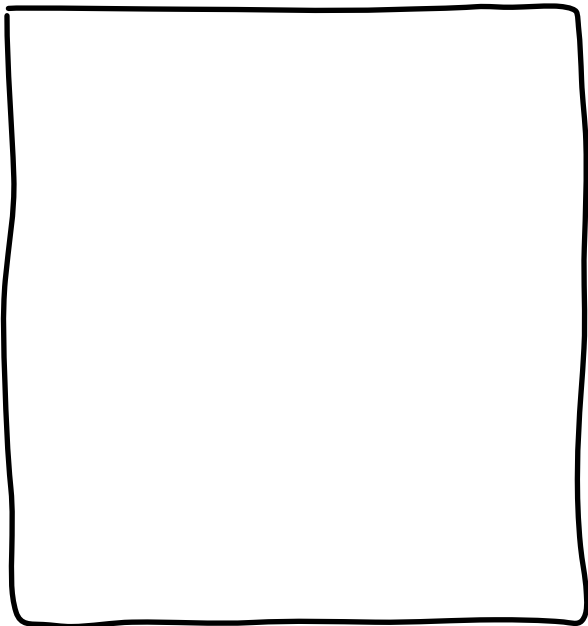
When it is daytime at your school, which telescopes could you use to look at the night sky?





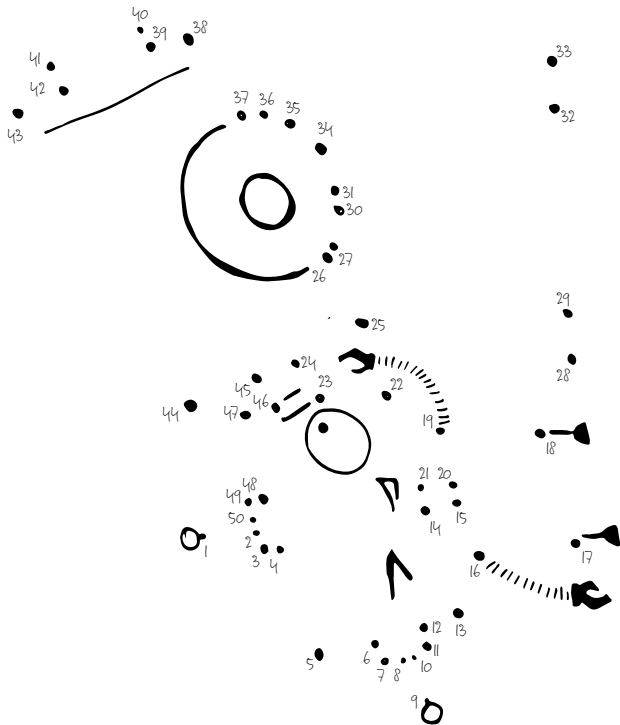
Controlling all the telescopes and sending beautiful pictures of space to your computer is hard work! Can you design me a friend to help do my job?

Draw a picture of the robot which controls the telescope

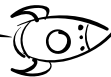


Join the dots

Join the dots to reveal a secret picture!



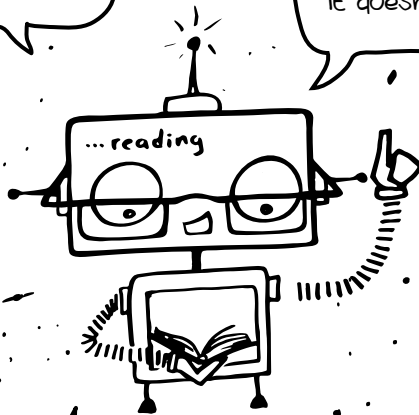
FUN FACTS



Each day Serol the robot is sent thousands of requests for observations from all around the world!

Serol the robot works 24 hours a day, 7 days a week, telling each of the telescopes where it should be looking. It doesn't even take Christmas off.

Serol the robot knows when the Sun rises and sets, everywhere in the world. That's how it knows which of the telescopes to use to look at the night sky.



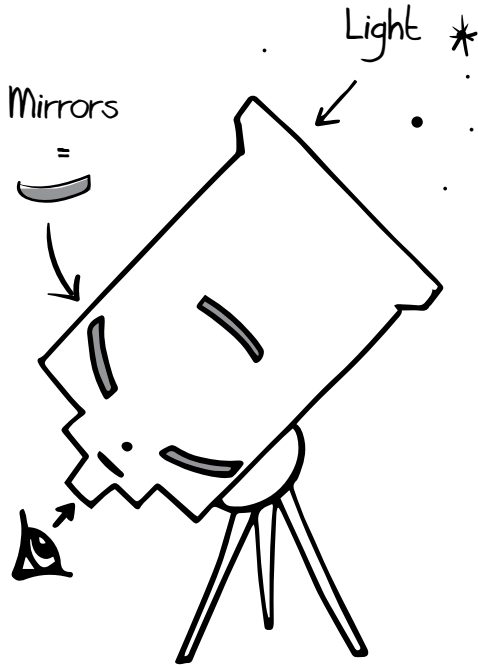
It takes 18 months to build one of our robotic telescopes, that's the same amount of time it takes for a baby elephant to grow!

Each of our telescopes has over 650 wires, if you put them in a line it would stretch the length of the world's tallest building!

The mirrors in our telescopes are incredibly smooth. A human hair is 1000 times thicker than the biggest bumps on their surface!

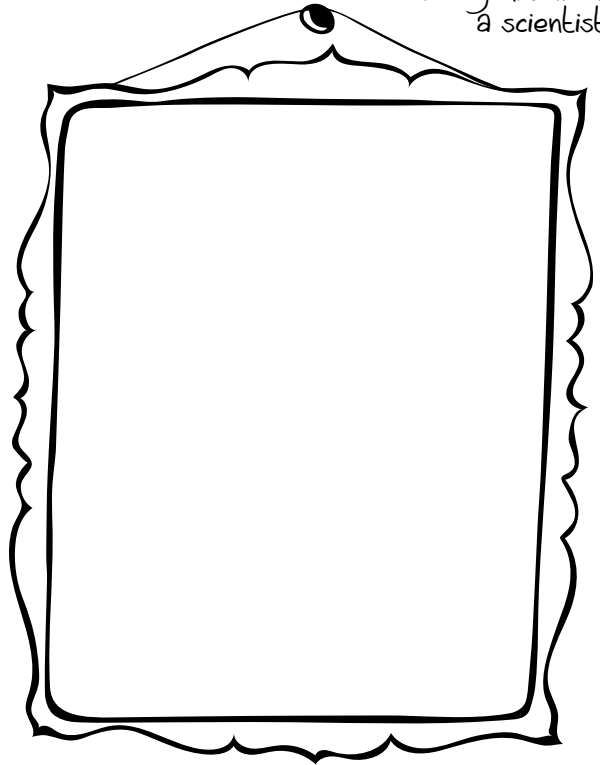
How does the telescope work?

Draw your own light path: draw the path the light takes to reach the eyepiece. Remember that light always travels in straight lines!



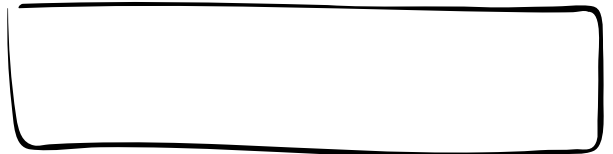
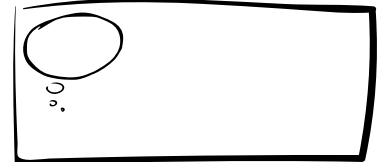
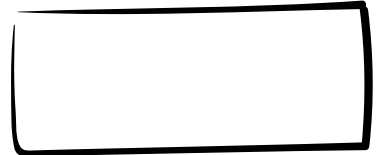
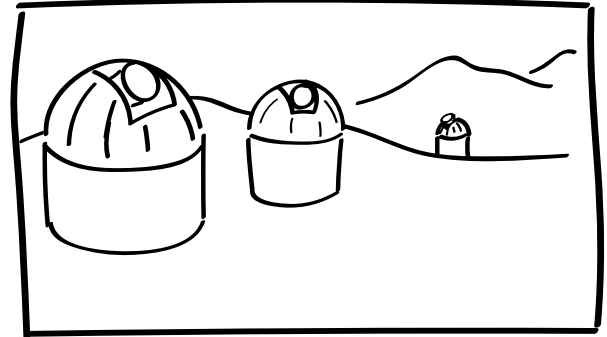
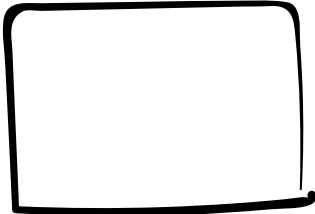
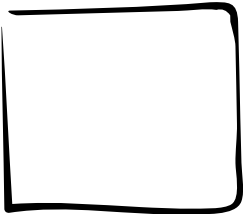
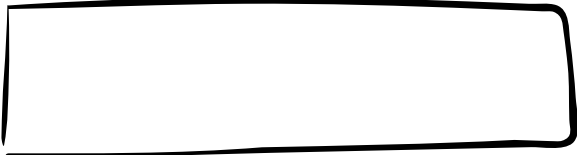
When you use this telescope you are a scientist.

Draw yourself as a scientist

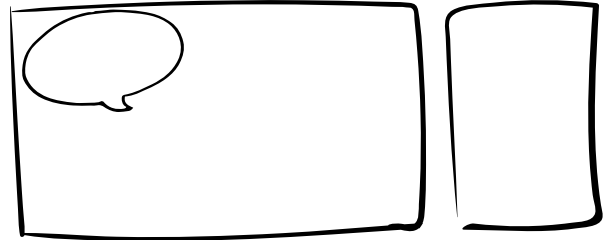
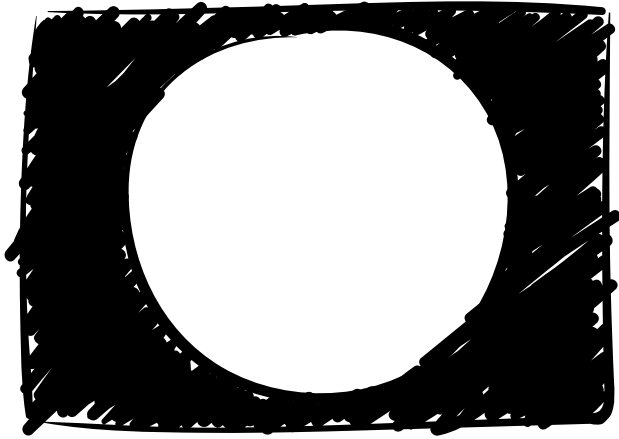


COMIC STRIP

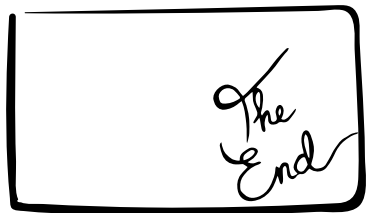
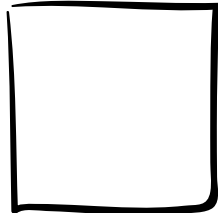
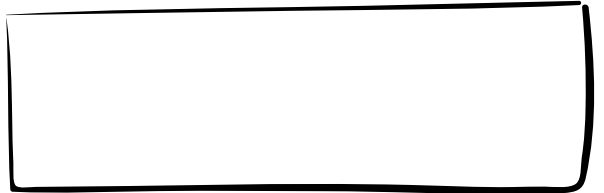
Serol the robot is on top of a mountain in Chile controlling one of our telescopes. Draw a comic strip to show his night-time adventure!



Look through the telescope, what do you see?

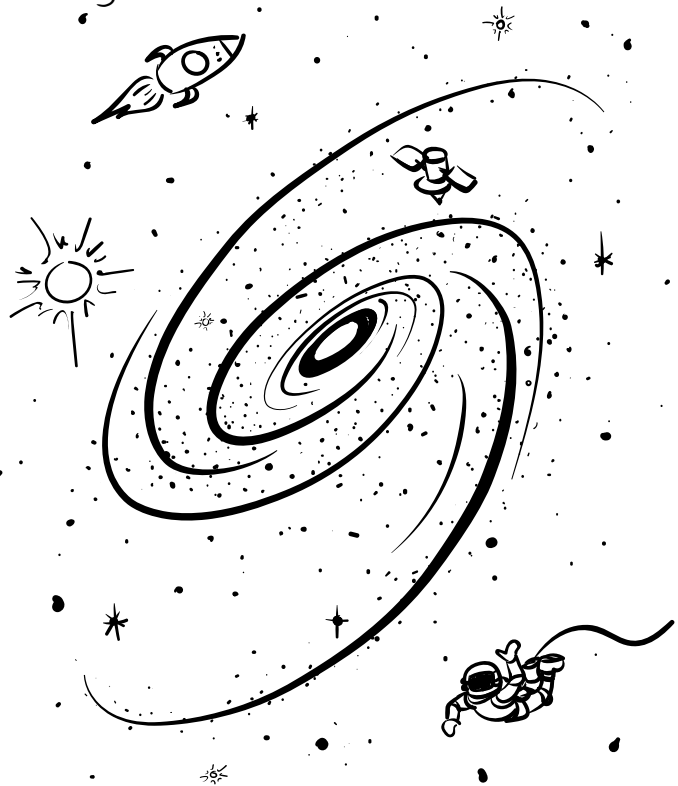
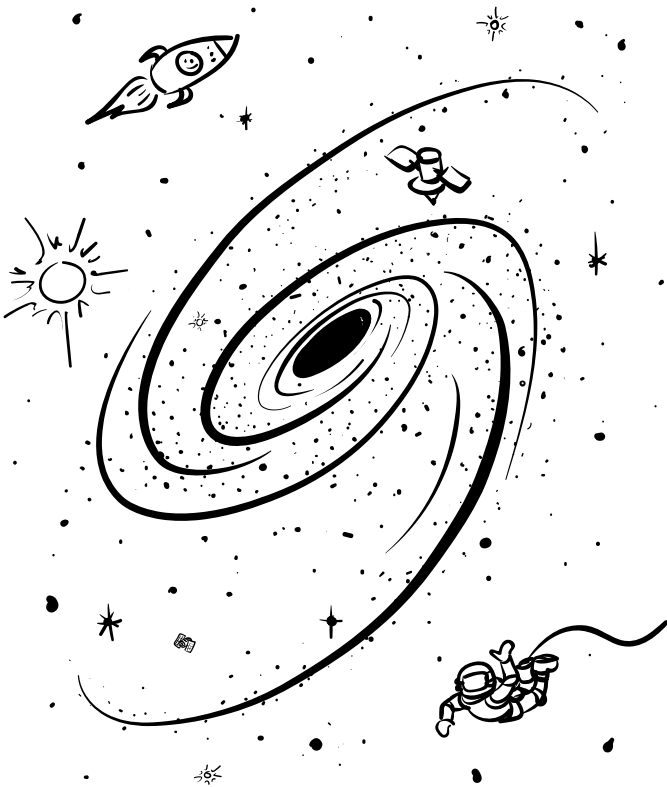


The Sun has come up, what do you do?



Spot the Difference

Can you find 5 differences between these two galaxies?



Can you find these objects in the picture above/below?

STARS, SPIRAL ARMS, BLACK HOLE

**Write a poem about galaxies...
in the shape of a telescope!**

